



MAP 7th Grade

PDF Sample Test

Math, Reading, Language Usage, and Science Practice Questions



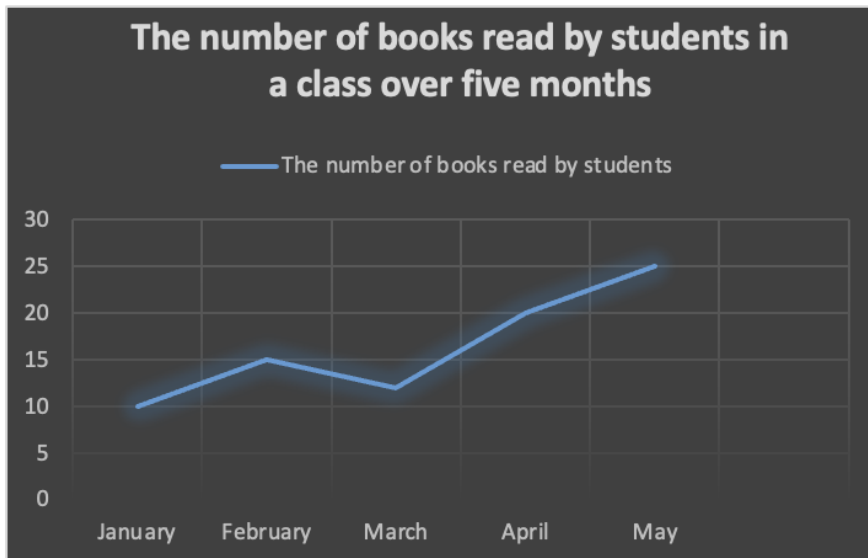
* The correct answers and explanations are located at the end of this PDF.

NWEA MAP 7th Grade Math Practice Questions

Question #1

Statistics and Probability Sample Question - Below-Grade-Level

The table below shows the number of books read by students in a class over five months. Based on the line graph answer the following question:



Between which two consecutive months was the greatest increase in the number of books read?

- A. January to February
- B. February to March
- C. March to April
- D. April to May

Question #2

Operations and Algebraic Thinking Sample Question - At-Grade-Level

Use the table to answer the question.

Number of Items Bought (x)	Total Cost in \$ (y)
3	11
5	13
9	17
12	20

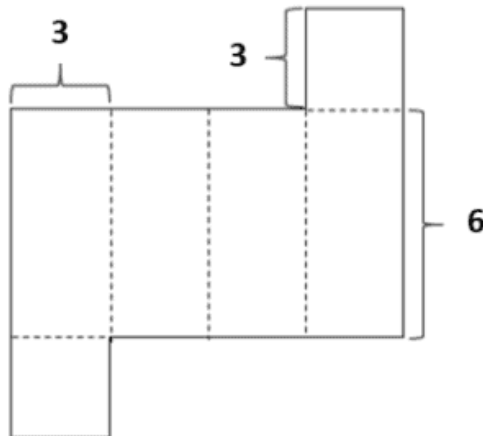
Find the relationship between x and y, in the form $y = x + c$.

- A. $y = x + 4$
- B. $y = x + 8$
- C. $y = x - 8$
- D. $y = x + 7$

Question #3

Geometry Sample Question - Above-Grade-Level

What is the surface area of the prism below?



- A. 80
- B. 90
- C. 100
- D. 36



NWEA MAP 7th Grade Reading Practice Questions

Question #4

Informational Text Sample Question - Below-Grade-Level

Read the two texts.

Text 1: “The Power of Sleep”

Sleep is essential for both the brain and the body. During sleep, the brain processes information and builds memory. The body also uses this time to grow and repair cells. Experts recommend that teenagers get 8–10 hours of sleep each night to stay healthy and focused.

Text 2: “How Sleep Affects School Performance”

Lack of sleep can negatively affect students in school. Without enough rest, students may have trouble concentrating, remembering lessons, and staying alert. Studies show that students who get enough sleep often perform better on tests and feel more motivated.

Which sentence best combines the main, or central, ideas of both texts?

- A. Sleep is important for both physical health and academic success.
- B. Teenagers who don't sleep enough will fail all their tests.
- C. Sleep only helps with physical health, not school performance.
- D. Sleeping too much can make students lazy and unmotivated.
- E. Students should take naps during every school break.

Question #5

Vocabulary Sample Question - At-Grade-Level

tap *verb*: To strike something gently to get someone's attention or to comfort someone.

Which sentence uses the word “tap” with this definition?

- A. The dancer wore special shoes that made a loud tap sound on the wooden floor.
- B. He turned the faucet handle, and water began to flow from the tap.
- C. She gently tapped her friend on the shoulder to say hello.
- D. The app will tap into your location to provide weather updates.
- E. The company wants to tap new markets in other countries.



Question #6

Literary Text Sample Question – Above-Grade-Level

“The Last Lightbulb”

In a town where electricity had become too expensive for everyday use, 14-year-old Mariah set out to build something that could power her home using sunlight and scrap materials. Everyone in her neighborhood laughed at the idea—solar energy was too complex, they said. But Mariah refused to give up. After months of trial and error, she built a working solar generator using old mirrors, wiring, and car batteries. Her success inspired others in the community to start inventing and rethinking how they used energy.

What is the main theme of “The Last Lightbulb”?

- A. Innovation and persistence can lead to real change.
- B. Adults always know better than children.
- C. Renewable energy is more powerful than fossil fuels.
- D. People should never question new technology.

NWEA MAP 7th Grade Language Usage Practice Questions

Question #7

Understand and Edit for Mechanics Sample Question – Below-Grade-Level

Which sentence correctly uses a comma after the introductory phrase?

- A. After a long and exhausting meeting we finally reached an agreement that satisfied everyone in the team.
- B. After, a long and exhausting meeting we finally reached an agreement that satisfied everyone in the team.
- C. After a long and exhausting meeting, we finally reached an agreement that satisfied everyone in the team.
- D. After a long and exhausting meeting we finally, reached an agreement that satisfied everyone in the team.

Question #8

Understand, Edit for Grammar, Usage – At-Grade-Level



Identify the gerund and its function in the following sentence:

“Mark’s greatest challenge was balancing his academic work with his sports commitments.”

- A. “Balancing” as the predicate nominative
- B. “Balancing” as the direct object
- C. “Challenge” as the gerund functioning as subject
- D. “Balancing” as the object of the preposition

Question #9

Write & Revise Texts for Purpose and Audience Sample Question – Above-Grade-Level

Which of the following sequences orders the topics from the broadest category to the narrowest, given the sentence:

“When writing a research paper about environmental issues, it is important to narrow your focus from a general concept to a specific subject.”

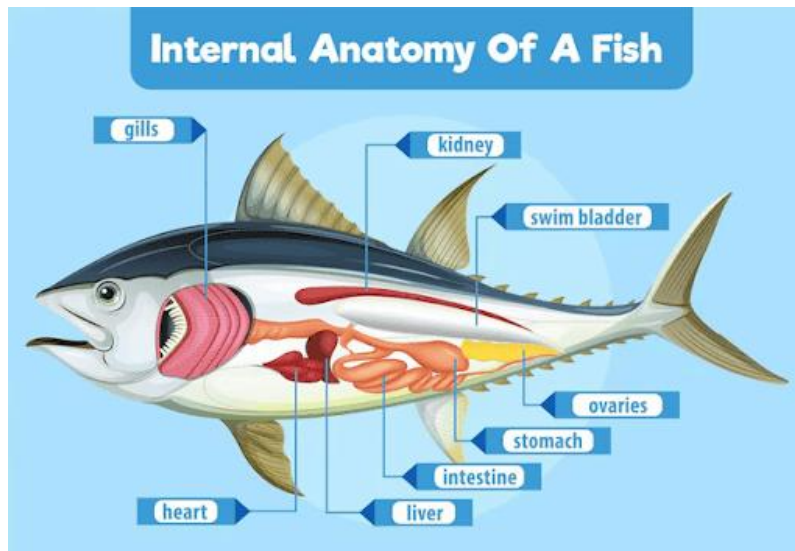
- A. Photovoltaic cells → Solar panels → Renewable energy → Global climate change
- B. Solar panels → Renewable energy → Global climate change → Photovoltaic cells
- C. Renewable energy → Global climate change → Solar panels → Photovoltaic cells
- D. Global climate change → Renewable energy → Solar panels → Photovoltaic cells

NWEA MAP 7th Grade Science Practice Questions

Question #10

Life Sciences Sample Question – Below-Grade-Level

The diagram shows some structures of a fish. Which statement best describes how a fish’s gills primarily help it survive?



- A. Gills help the fish swim faster to escape predators.
- B. Gills take in oxygen from the water so the fish can breathe.
- C. Gills help the fish find food in murky water.
- D. Gills protect the fish's body from getting injured.

Question #11

Earth and Space Sciences Sample Question - At-Grade-Level

The planets in our solar system are held in elliptical orbits by the Sun's gravitational pull. If the force of the Sun's gravity were to suddenly disappear, which path would Earth most likely follow?



Path A: It would continue to orbit the Sun as if nothing had changed.

Path B: It would fly radially outward, directly away from the Sun's position.

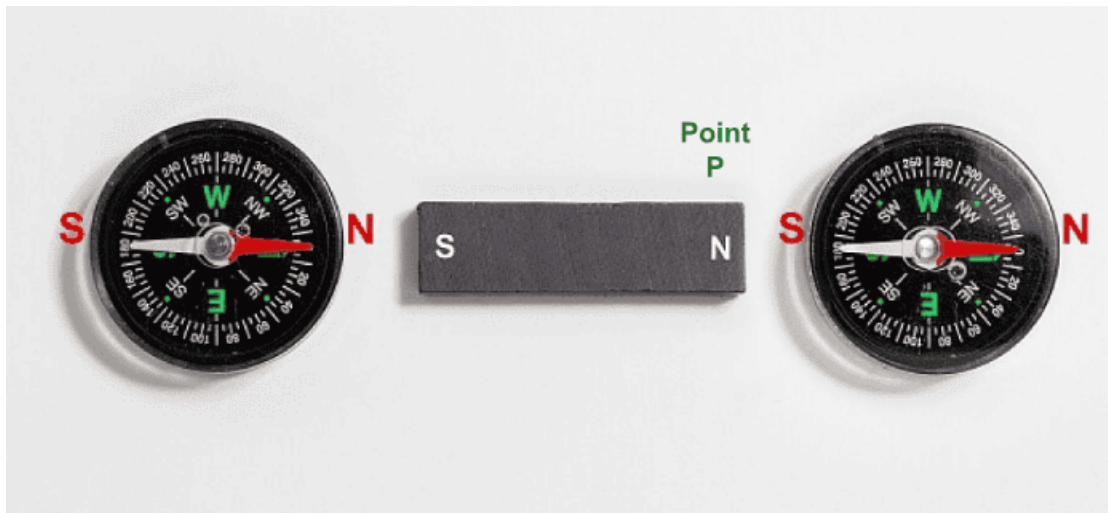
Path C: It would stop moving and remain stationary in space.

Path D: It would continue moving in a straight line at a constant velocity.

Question #12

Physical Sciences Sample Question - Above-Grade-Level

The diagram shows a bar magnet and a compass. The compass needle is a small magnet that is free to rotate. Point P is located near the North pole of the bar magnet.



Which direction will the North pole of the compass needle point when placed at point P?

- A. Towards the North pole of the bar magnet.
- B. Away from the North pole of the bar magnet (to the left).
- C. Towards the South pole of the bar magnet.
- D. Perpendicular to the bar magnet (up or down).



Keep practicing and improving your skills – [get more accurate practice resources for the NWEA MAP 7th Grade](#) to help your child prepare and score high.

Correct Answers & Explanations

Question #1

Correct answer: C

Explanation:

For each month, mark a point above the month on the x-axis corresponding to the number of books read in January (10), February (15), March (12), April (20), and May (25).

To find the greatest increase, calculate the difference in the number of books read between consecutive months:

January to February: $15 - 10 = 5$

February to March: $12 - 15 = -3$ (a decrease of 3)

March to April: $20 - 12 = 8$

April to May: $25 - 20 = 5$

The largest positive difference is 8, between March and April (option C).

Question #2

Correct answer: B

Explanation:

The equation suggests that the total cost y is equal to the number of items x , plus a fixed constant c .



We will calculate c using any pair of x and y values.

From the table, when $x=3$ and $y=11$.

Substitute these into the equation, $y = x + c$:

$$11 = 3 + c$$

Solve for c :

$$c = 11 - 3 = 8$$

Thus, the equation becomes:

$$y = x + 8$$

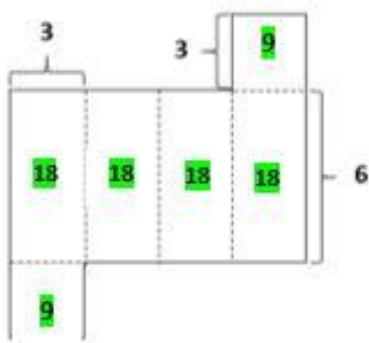
Hence, **option B** is correct.

Question #3

Correct answer: B

Explanation:

The surface area of the above figure is the sum of the rectangular area shown below.



$$\text{Surface area} = 9 + 9 + 18 + 18 + 18 + 18 = 90$$



Question #4

Correct answer: A. Sleep is important for both physical health and academic success.

Explanation:

This sentence correctly summarizes the main ideas from both Text 1, which focuses on how sleep benefits the brain and body, helping with memory and physical repair.

Text 2 emphasizes the academic benefits, showing that sleep helps students concentrate and perform well in school. Option D combines both of these ideas into one clear and accurate summary.

Why the other choices are incorrect:

B. Teenagers who don't sleep enough will fail all their tests.

This choice exaggerates the impact of poor sleep. While Text 2 does say that lack of sleep can hurt academic performance, it does not say that students will fail all their tests. The statement is too extreme and not backed by the texts.

C. Sleep only helps with physical health, not school performance.

This directly contradicts the second text, which explains how sleep helps students with focus, memory, and motivation. Therefore, this answer ignores half of the information presented.

D. Sleeping too much can make students lazy and unmotivated.

This is not supported by either text. Neither article says that sleeping too much causes laziness. Instead, they both focus on the benefits of getting the recommended amount of sleep.

E. Students should take naps during every school break.

While naps can be helpful, neither text mentions naps or suggests taking them during school breaks. This answer introduces new, unrelated information not found in either passage.

Question #5

Correct answer: C

Explanation:



C. She gently tapped her friend on the shoulder to say hello.

This sentence matches the definition of “tap” as a light touch used to get someone’s attention or to show care.

Why the other choices are incorrect:

A. This sentence uses “tap” to describe the sound made by shoes, not a gentle action.

B. Here, “tap” refers to a faucet, which is a completely different meaning.

D. In this case, “tap” means to access or use something (like location data).

E. This usage of “tap” means to enter or take advantage of a resource (like a market), not to touch lightly.

Question #6

Correct Answer: A. Innovation and persistence can lead to real change

Mariah’s story shows that her determination and creativity led to a practical solution that helped her community. The story highlights how persistence and innovation, even from a young person, can inspire progress and change—making this the central theme.

Why the other choices are incorrect:

B. Adults always know better than children

The adults in the story doubted Mariah, and she proved them wrong. The theme celebrates youthful innovation, not adult wisdom.

C. Renewable energy is more powerful than fossil fuels.

While renewable energy is part of the context, the story is not a scientific argument. It’s more about personal effort and creativity, not an energy comparison.

D. People should never question new technology

The townspeople were skeptical of solar energy, but questioning wasn’t shown as wrong. The message is about overcoming doubt, not discouraging questions.



Question #7

Correct answer: C. After a long and exhausting meeting, we finally reached an agreement that satisfied everyone in the team.

Explanation:

“After a long and exhausting meeting” is an introductory prepositional phrase. It sets up when the main action happened. A comma is required to clearly separate this introductory phrase from the main subject and verb that follow.

Without the comma, the reader might misread the sentence, so the comma acts as a guide.

Why the other choices are incorrect:

- A. Skipping the comma makes the sentence harder to process and the main subject/verb (“we finally reached”) unclear after a long phrase.
- B. Incorrect comma placement after “After” breaks the prepositional phrase. “After” needs to stay connected to the phrase “a long and exhausting meeting.”
- D. Incorrect comma placement after “finally” breaks the flow between the subject “we” and the verb “reached.”

Question #8

Correct answer: A. “Balancing” as the predicate nominative.

Explanation:

Here, “Balancing his academic work with his sports commitments” renames or defines “Mark’s greatest challenge” and follows a linking verb (was).

This makes it a predicate nominative, a noun following a linking verb that renames the subject.

Why the other choices are incorrect:

- The gerund is not functioning as a direct object; it’s renaming the subject.
- The gerund is not the subject; “Mark’s greatest challenge” is the subject.
- Although gerunds can function as objects of prepositions, that is not the role here; it follows a linking verb and renames the subject.



Question #9

Correct Answer: D) Global climate change → Renewable energy → Solar panels → Photovoltaic cells.

Explanation:

“Global climate change” is the broadest, referring to worldwide environmental patterns.

“Renewable energy” narrows the focus to methods of combating climate change.

“Solar panels” is more specific, detailing one type of renewable energy.

“Photovoltaic cells” is the narrowest, describing the component technology of solar panels.

Why the other choices are incorrect:

- A.** Starts with the narrowest (photovoltaic cells) and goes to the broadest (global climate change), reversing the required order.
- B.** The order does not move consistently from broad to narrow; it jumps between levels.
- C.** Begins with “renewable energy,” which is narrower than “global climate change,” making the order incorrect.

Question #10

Correct Answer: B

Explanation:

Organisms have specialized structures that perform specific functions essential for survival. Fish live in water and, like other animals, need oxygen to live. Instead of lungs like humans, fish have gills.

Water enters the fish’s mouth and flows over the gills, which are full of tiny blood vessels. These blood vessels absorb dissolved oxygen directly from the water.

Carbon dioxide, a waste gas, is then released from the blood into the water through the gills. This process allows the fish to “breathe” underwater. Fins help with movement, and scales offer protection, but gills are crucial for respiration.



Question #11

Correct Answer: Path D

This question relates to the concepts of gravity and inertia. Gravity provides the constant centripetal force that pulls Earth toward the Sun, forcing it to travel in a curved (orbital) path.

Inertia is an object's tendency to resist changes in its state of motion. If the Sun's gravity vanished, the force causing the orbital path would be gone.

Due to its inertia, Earth would no longer curve its path but would continue moving in a straight line, tangent to the point in its orbit where gravity disappeared, at the velocity it had at that instant.

Question #12

Correct Answer: B

A compass needle is a small magnet, and its North pole will align itself with the local magnetic field lines. Magnetic field lines emerge from the North pole of a magnet and enter its South pole. Like magnetic poles repel each other, and unlike poles attract.

At point P, which is near the North pole of the bar magnet, the North pole of the compass needle will be repelled by the North pole of the bar magnet. Simultaneously, it will be attracted towards the more distant South pole of the bar magnet. The dominant effect at point P, just outside the North pole, is the repulsion from the bar magnet's North pole.

Therefore, the North pole of the compass needle will point away from the North pole of the bar magnet (to the left in the described orientation). This demonstrates how a compass can be used to map the direction of a magnetic field, which exists in the space around a magnet even without direct contact.

Keep practicing to boost your child's skills!

[Click here to get instant access](#) to more practice resources for NWEA MAP 7th Grade – everything you need to help your child prepare and excel.

If you've printed this PDF, simply search "MAP Test 7th Grade GiftedReady" on Google or your favorite search engine to find all our expert resources.